



21 Englands Way, Bournemouth, BH11 8NG

£275,000



21 Englands Way, Bournemouth, BH11 8NG

£275,000

Two Bedroom Terraced House | Spacious Lounge | Kitchen Dining Room | Private Rear Garden | Popular Residential Location

A well-presented two bedroom terraced home offering generous internal accommodation, a practical layout, and a private rear garden, ideally suited to first-time buyers, downsizers, or young families.

The property opens into a welcoming spacious lounge, providing a comfortable living area with ample room for seating and furnishings. Double doors lead through to the kitchen dining room, creating a natural flow between the main living spaces. The kitchen is well proportioned, fitted with a range of units and worktop space, and benefits from room for a dining table. A rear door provides direct access to the garden, making it ideal for everyday living and entertaining.

To the first floor, there are two well sized bedrooms. The main bedroom is a comfortable double, while the second bedroom offers flexibility as a child's room, guest bedroom, or home office. The family bathroom is fitted with a modern white suite and walk-in shower, finished in neutral tiling.

Externally, the property benefits from a private, enclosed rear garden, designed for low maintenance and offering a pleasant outdoor space to enjoy throughout the year. To the front, the property has a neat approach with scope for personalisation.

Description



Situation

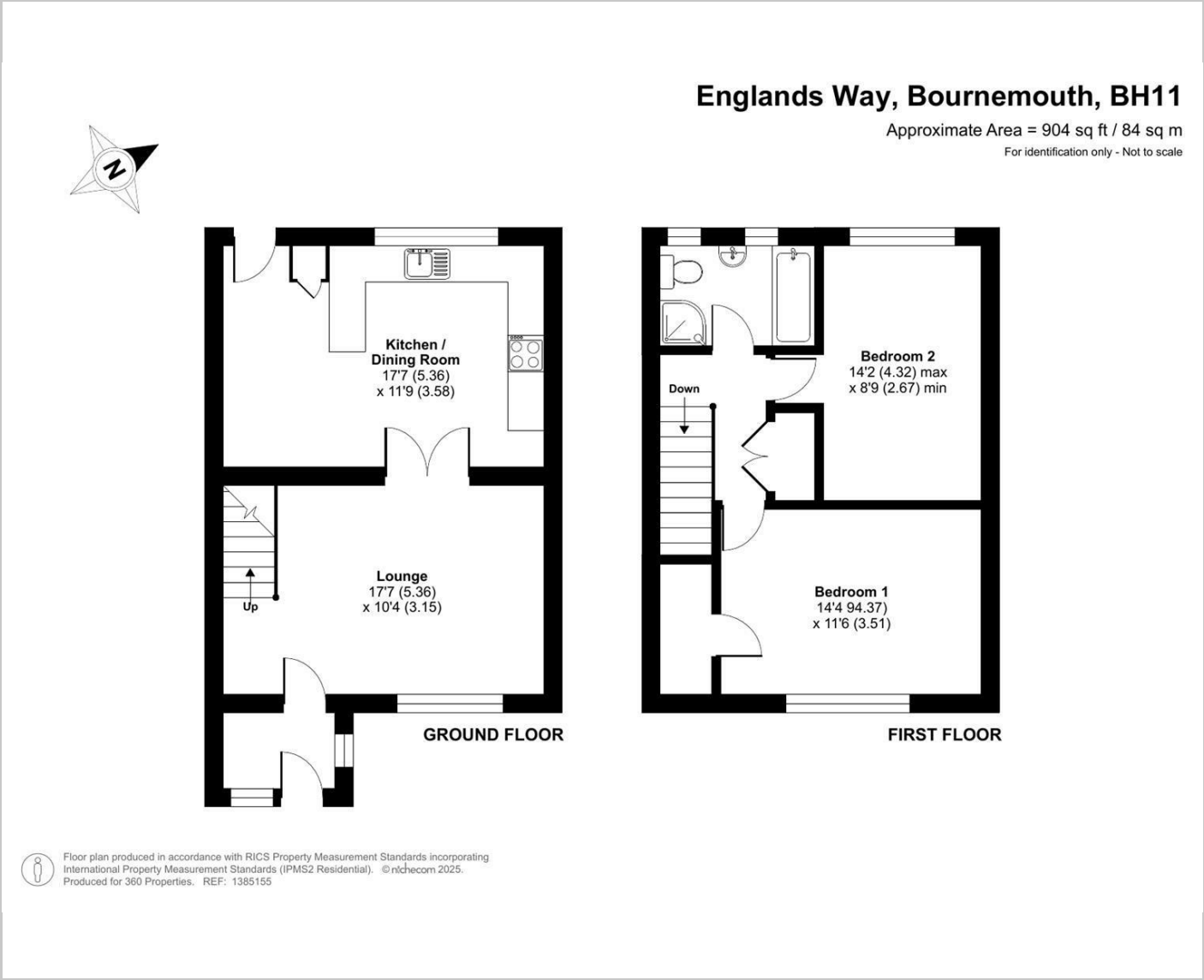


null

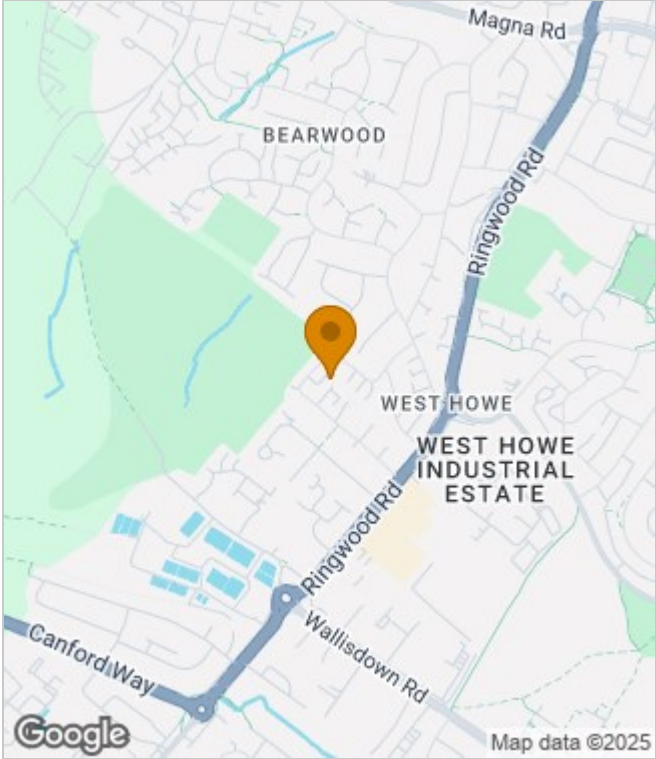
Council Tax Band: B

Available:

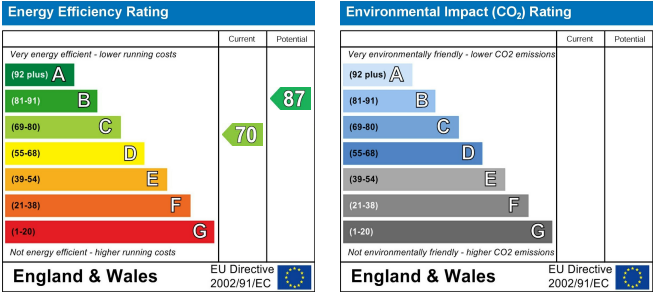
Floor Plans



Area Map



Energy Performance Graph



These particulars, whilst believed to be accurate are set out as a general outline only for guidance and do not constitute any part of an offer or contract. Intending purchasers should not rely on them as statements of representation of fact, but must satisfy themselves by inspection or otherwise as to their accuracy. No person in this firms employment has the authority to make or give any representation or warranty in respect of the property.